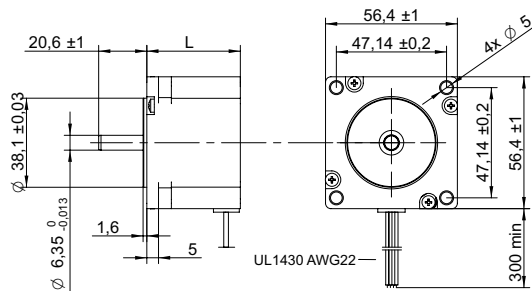
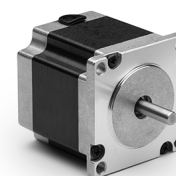


DRAWING (mm)



PHOTO



MODEL NO. DESIGNATION

SHW57 - STEP ANGLE - CURRENT

Example: SHW5740-18-280

OPTIONS DRIVER AND POWER SUPPLY



● C = customizations are offered on demand even for smaller quantities. Typical customizations are indicated with a green dot at column end. Please contact us for any customization request.

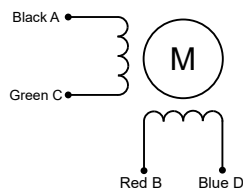
COMMON MOTOR DATA

Parameter	Value	C
Step angle	1.8°	
Step angle accuracy ¹	± 5%	
Shaft material	X8CrNiS18-9 SUS303	●
Bearing type	Ball bearing	●
Radial play ²	0.02 mm	
Axial play ²	0.08 mm	
Max. radial force ³	75 N	
Max. axial force	15 N	
Dielectric strength ⁴	600 V	
Insulation resistance ⁵	100 MΩ	
Operating temperature	-20 to 50 °C	●
Insulation class	Class B	
IP rating	IP30	●
Connection harness	UL 1430 AWG22 300 mm	●
Connector	Not in standard	●

MODEL-SPECIFIC MOTOR DATA

Model	SHW5740-18-280	SHW5750-18-280	SHW5775-18-280	SHW57115-18-280
Graph	A	B	C	-
Holding torque	Nm 0.55	1	1.9	3
Detent torque	Nm 0.02	0.035	0.068	0.1
Rotor inertia	gcm ² 120	275	480	650
Current phase	A 2.8	2.8	2.8	2.8
Resistance phase	Ω 0.7	0.83	1.13	2.1
Inductance	mH 1.4	2.2	3.6	10
Length	mm 40	50	75	115
Weight	kg 0.45	0.65	1	1.8

EXCITATION SEQUENCE TABLE



CW	A	C	B	D
1	●		●	
2		●	●	
3		●		●
4	●			●
1	●		●	

● = +Polarity

SPEED | TORQUE PERFORMANCE GRAPH PULL OUT

Graph	A	B	C	D
Supply voltage	V 48	48	48	-
Current phase	A 2.8	2.8	2.8	-

NOTES

1. Full step no load.
2. 450 g load.
3. 20 mm from shaft.
4. AC, 1 second.
5. 500 V, DC.

