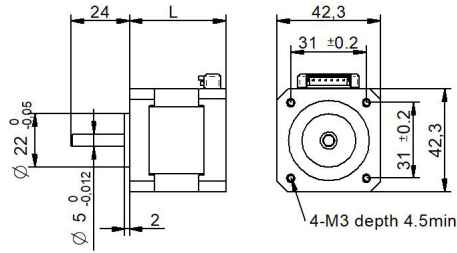
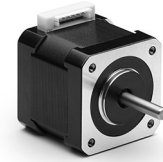


SHC42-18 Series connector □ 42 mm

DRAWING (mm)



PHOTO



MODEL NAME DESIGNATION

SHW3520 - STEP ANGLE - CURRENT

Example: SHW35-09-100



OPTIONS MOTOR DRIVERS AND POWER SUPPLIES



MOTOR FEATURES

| | |
|-----------------------|------------------------|
| Step angle | 1.8 |
| Step angle accuracy | ± 5% full step no load |
| Shaft material | X8CrNiS18-9 303 |
| Bearing type | Ball bearing |
| Radial play | 0.02 mm 450 g |
| Axial play | 0.08 mm 450 g |
| Max. radial force | 28N 20 mm from shaft |
| Max. axial force | 10N |
| Dielectric strength | 600VAC 1 sec. |
| Insulation resistance | 100MΩ 500VDC |
| Ambient temperature | -20° - (+50°) |
| Insulation class | Class B |
| IP rating | IP30 |
| Connection harness | UL 1061 AWG26 300 mm |
| Connector | JST B6B-EH-A |

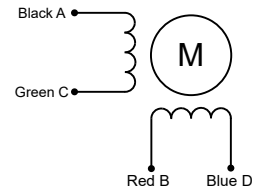
CUSTOMIZATION EXAMPLES

- Shaft configurations
- Bearing type and preload
- Temperature range
- IP rating
- Winding and performance optimization
- Cabling and harness
- Gear box to motor combinations
- Encoder to motor combinations

OPTIONS

- Stepper motor drivers Transmotec DS series
- Power supplies Transmotec LRS series

EXCITATION SEQUENCE TABLE



| PIN | 2 | 4 | 3 | 5 |
|-----|---|---|---|---|
| CW | A | C | B | D |
| 1 | ● | | ● | |
| 2 | | ● | ● | |
| 3 | | ● | | ● |
| 4 | ● | | | ● |
| 1 | ● | | ● | |

● = + Polarity

MOTOR DATA

| Graph | A | B | C |
|--------------------------------|----------------|----------------|----------------|
| Motor model | SHC4234-18-133 | SHC4240-18-168 | SHC4248-18-168 |
| Holding torque mNm | 220 | 360 | 440 |
| Detent torque mNm | 12 | 15 | 20 |
| Rotor inertia gcm ² | 35 | 54 | 68 |
| Current phase A | 1.33 | 1.68 | 1.68 |
| Resistance phase Ω | 2.10 | 1.65 | 1.65 |
| Inductance mH | 2.5 | 3.2 | 2.8 |
| Length mm | 33.5 | 39.5 | 47.5 |
| Weight Kg | 0.220 | 0.280 | 0.350 |

SPEED | TORQUE PERFORMANCE GRAPH PULL OUT

| Graph | A | B | C |
|--------------------|------|------|------|
| Supply voltage VDC | 36 | 36 | 36 |
| Current phase A | 1.36 | 1.69 | 1.69 |

