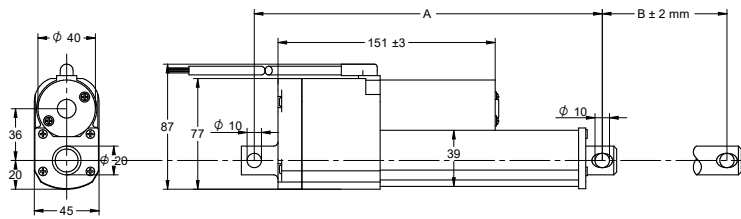
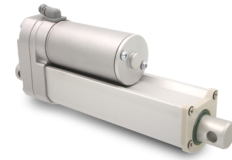


### DRAWING (mm)



### PHOTO



### MODEL NO. DESIGNATION



Example: DLB-12-20-A-305-POT-IP65

### OPTIONS MOUNTING BRACKET



● C = customizations are offered on demand even for smaller quantities. Typical customizations are indicated with a green dot at column end. Please contact us for any customization request.

### ACTUATOR DATA C

Reduction	10	20	30	40	50	C
Voltage	V 12   24	12   24	12   24	12   24	12   24	
Current at nominal dynamic load	A 4.4   2.4	4.6   2.3	4.3   2.3	4.5   2	4.1   2.2	
Nominal dynamic load	N 500	1000	1500	2000	2500	
Max. static load	N 1500	4500	4500	4500	4500	
Speed at nominal dynamic load	mm/s 19	11	6.8   7.2	5.1   5.7	4.4	

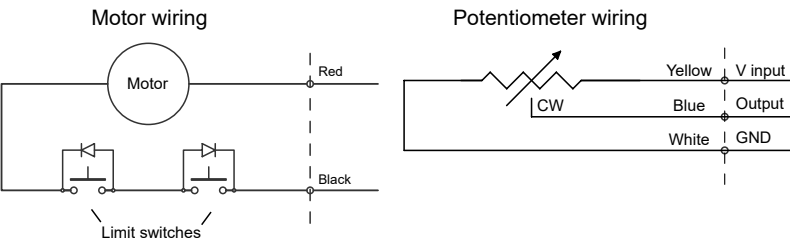
### ACTUATOR STROKE DATA C

Stroke length B	mm 100	150	200	250	300	C
Retracted length A	mm 205	255	305	355	405	
Resistance	kΩ 0.3 - 8.8	0.3 - 9.6	0.3 - 8.9	0.3 - 9.5	0.3 - 9.5	
Feedback	Ω/mm 95	55	46	36	30	
Life time number single strokes	40000	27000	20000	16000	13000	
Weight	kg 1.3	1.4	1.5	1.6	1.7	

### ACTUATOR FEATURES C

Type	Electric linear actuator	
Motor type	Brush PM DC motor	
Cable type	Flying wire (3+2 wires)	●
Cable length	mm 900	●
Voltage	V 12   24	●
Screw type	ACME	
Screw pitch	mm 4.23	
Noise level	dB(A) ≤ 70	●
Life time	4 million mm total stroke	
Limit switches	Yes, integrated non-adjustable	●
Direction movement	By reversing voltage polarity	
Stroke tolerance	mm ± 2.5	
Duty cycle	% 25	
Max. duty operational time	s 60 nominal dynamic load	
IP rating	IP65	
Insulation class	F	
Max. motor winding temp.	°C 155	
EMC	EN55014 IEC61000	
Gearbox	Metal spur gears	
Motor pinion gear	Metal SMF5030	
Gearbox material	Aluminum die cast	
Rod and house material	Aluminum 6061	
Feedback	Potentiometer	
Operating and storage temperature	°C -25 to 65	
Manufacturing quality standards	ISO 9001:2008	
General actuator tolerance	% ± 15	

### WIRING DIAGRAMS

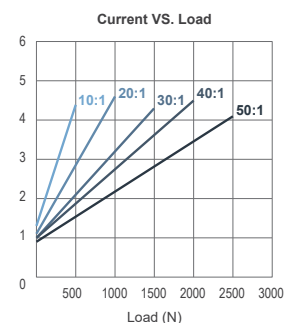
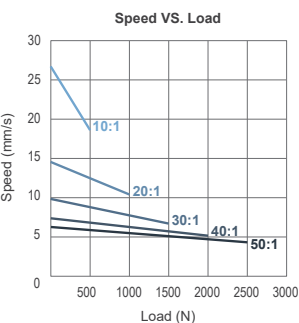


	Red	Black
Extend	+	-
Retract	-	+

### POTENTIOMETER DATA C

Potentiometer type	Wire wound	
Resistance	kΩ 0.3 - 9.5	
Resolution	% 0.025	
Resistance tolerance	% ± 5	
Linearity	% ± 0.25	

### MOTOR GRAPHS 12 V



### MOTOR GRAPHS 24 V

